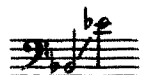


ТРУДАМИ ИЗНУРЕН, ХОЧУ УСНУТЬ...



Слова В. ШЕКСПИРА
Перевод С. Маршака

Ноты с сайта - www.notarihiv.ru

Д. КАВАЛЕВСКИЙ

Соч. 52, № 2

Con moto. Appassionato 4/4 = 72

нар

Тру- да-ми из-ну- рен, хо- чу у- снуть,

бла-жен- ный от-дых об-ре- сти в по-сте- ли. Но толь-ко

ля- гу, вновь пус- ка-юсь в путь — в сво- их меч- тах — к од-

- ной и той же це- ли.

poco rit.

a tempo poco più mosso

mf

Мо-и меч-ты и чув-ства в со-тый раз и-дут к те-

mf

poco a poco cresc.

-бе до-рогой пи-ли гри-ма, и, не смы-ка-я у-том-

-poco a poco cresc.

-лен-ных глаз, я ви-жу тьму, что и сле-

p

tr

-по-му зри-ма. У-серд-ным взо-ром

p

tr

серд - ца и у - ма во тьме те - бя и - шу, ли - шен - ный

The first system consists of a vocal line in the bass clef and a piano accompaniment in the grand staff (treble and bass clefs). The key signature has two flats (B-flat and E-flat), and the time signature is 4/4. The vocal line begins with a half note G2, followed by quarter notes A2, B2, and C3. The piano accompaniment features a steady eighth-note bass line and chords in the right hand.

meno f
зре - нья. И ка - жет - ся ве - ли - ко -

meno f

The second system continues the vocal line and piano accompaniment. The vocal line has a half note D3, followed by quarter notes E3, F3, and G3. The piano accompaniment includes a triplet of eighth notes in the right hand and a descending eighth-note line in the left hand. Dynamics include *meno f* and *f*.

- леп ной тьма,

ff

The third system continues the vocal line and piano accompaniment. The vocal line has a half note A2, followed by quarter notes B2, C3, and D3. The piano accompaniment features a rhythmic pattern of eighth notes in the right hand and a descending eighth-note line in the left hand. Dynamics include *ff* and *f*.

ко - гда в не - е ты вхо - дишь свет - лой те - нью.

sf *ff*

The fourth system concludes the vocal line and piano accompaniment. The vocal line has a half note E3, followed by quarter notes F3, G3, and A3. The piano accompaniment features a rhythmic pattern of eighth notes in the right hand and a descending eighth-note line in the left hand. Dynamics include *sf* and *ff*.

росо rit.

The piano introduction consists of two staves. The right hand (treble clef) features a series of chords and a melodic line starting with a half note G4, followed by quarter notes A4, B4, and C5. The left hand (bass clef) plays a rhythmic accompaniment of eighth notes, with triplets of eighth notes in the first two measures.

Tempo I (ma poco meno mosso)

The first system of the vocal and piano accompaniment. The vocal line (bass clef) begins with a piano (*p*) dynamic. The lyrics are: "Мне от люб - ви по - ко - я не най -". The piano accompaniment (treble and bass clefs) provides harmonic support with chords and a rhythmic pattern.

The second system of the vocal and piano accompaniment. The vocal line continues with the lyrics: "- ти. И днем, и". The piano accompaniment includes a mezzo-forte (*mf*) dynamic and features triplets of eighth notes in the left hand.

The third system of the vocal and piano accompaniment. The vocal line concludes with the lyrics: "но - чью - я все - гда в пу - ти." The piano accompaniment includes a sostenuto (*sost.*) dynamic and features a triplet of eighth notes in the left hand.